

# Elston

3  1  1 

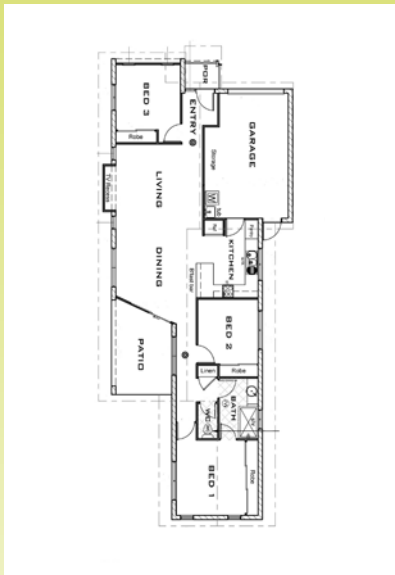
HOUSE  LAND  DRIVEWAY  FENCING  LANDSCAPING  JUST MOVE IN

house & land package from \$349,273\*

\$349,273\* on Lot 797 (320sqm)



All packages expire 31/12/10



- Open Plan Kitchen/Dining
- Patio
- Built-in robes

#### Inclusions

All external walls rendered & painted  
 Roof insulation, Anitcon Blanket  
 Colourbond custom orb roof  
 Rangehood, Underbench oven & cooktop  
 Built-ins to bedrooms, one mirror panel to door  
 Carpet to bedrooms  
 Tiles to living areas, entry, patio & wet areas  
 Ceiling fans  
 Security screened door  
 Clothesline, extendaline  
 Exposed aggregate driveway  
 2.5m high ceilings

Living Areas	103.19 sqm
Porch	1.92 sqm
Patio	11.05 sqm
Garage	23.15 sqm
<b>TOTAL AREA</b>	<b>139.31 sqm</b>

Electric Hot Water System  
 Panel lift remote double garage door  
 Air-conditioning  
 Built-in linen and broom cupboard  
 Two way bathroom  
 Exhaust fans  
 Tinted glass windows  
 Rendered Letterbox  
 TV antenna  
 Fencing  
 Landscaping Allowance  
 Turf and irrigation

Sales and Info Ph: 4723 8933

[www.kalyndachase.com.au](http://www.kalyndachase.com.au)

**urbex** *designed for life*



**kalynda**  
**chase**  
 connecting quality of life

\* House and land packages are priced with standard inclusions. Home and land sold separately. Urbex is responsible for the sale of the land only. Purchasers will need to enter into a separate contract with the relevant builder for the construction of the home. Photographs and illustrations are intended to be a visual aid only and do not necessarily depict the actual development of the home. Urbex gives no warranty and makes no representation as to the accuracy or sufficiency of any description, photography, illustration or statement contained in this brochure and accepts no liability for any loss which may be suffered by any person who relies wholly or in part upon the information presented. All information provided is subject to change without notice. Final designs will be subject to the purchasers obtaining building design covenant approval pursuant to the provisions of the Kalynda Chase Housing Design Guidelines.