

BRAZIER MOTTS PTY LTD. ACN 066 411 041  
 595 FLINDERS ST. TOWNSVILLE, HEREBY CERTIFY THAT  
 THIS DRAWING ACCURATELY AND CORRECTLY DESCRIBES  
 AND RECORDS THE NATURE AND LOCATION OF THE WORKS  
 DEPICTED BY ASTERISKS (\*) HEREON AS THEY HAVE BEEN  
 CONSTRUCTED FOR SUBDIVISION.

Dated This 15 day of May 2010  
 THE DIRECTOR  
 THE LICENSED SURVEYOR & DIRECTOR  
 ACN 066 411 041

**SEWERAGE LEGEND**

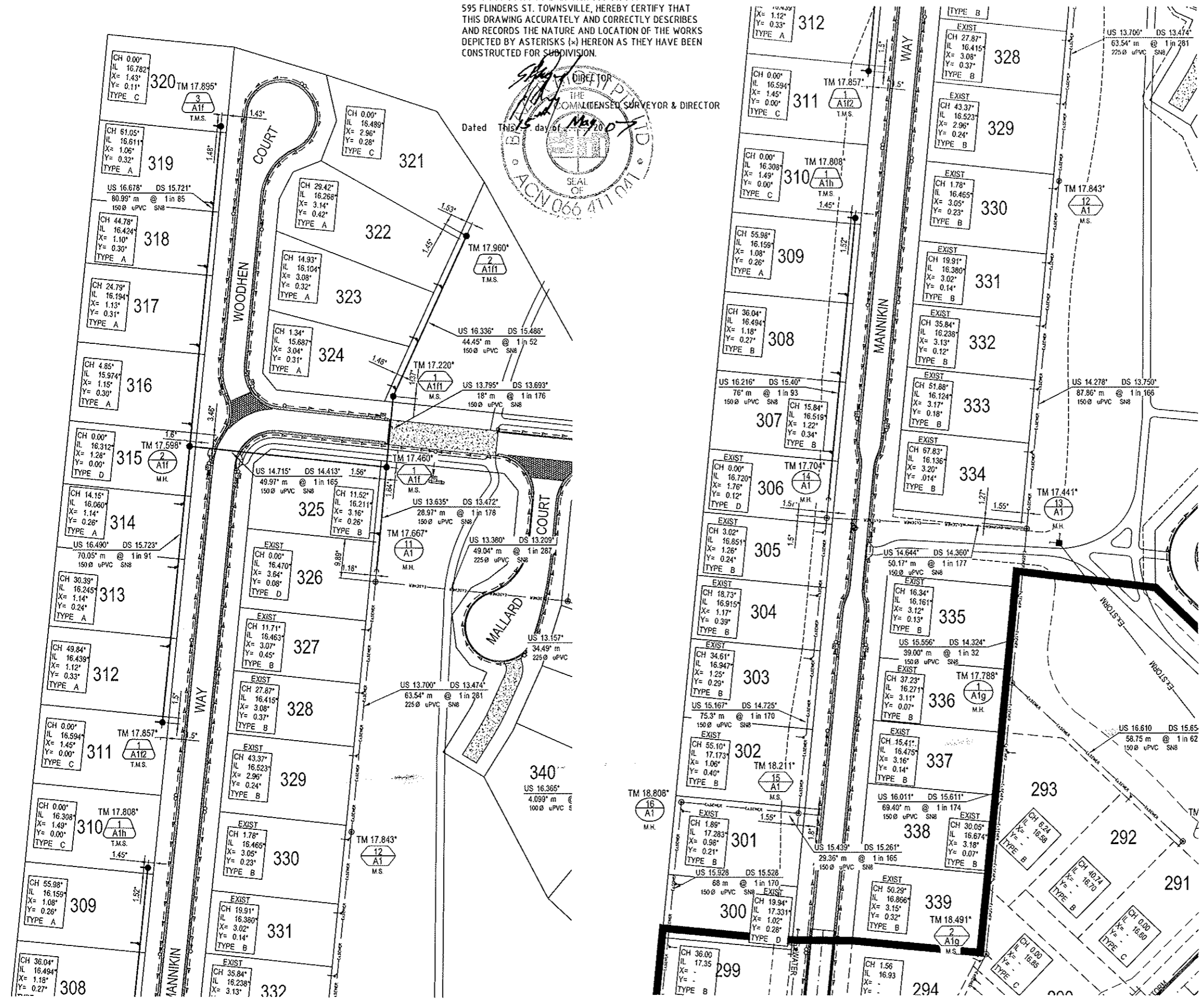
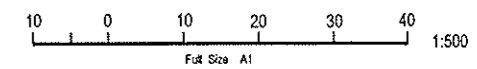
- EXISTING SEWERAGE
- CONSTRUCTED SEWERAGE
- SEWERAGE
- SEWER MANHOLE (M.H.)  
 TOP OF MANHOLE R.L.  
 MANHOLE NUMBER  
 LINE NUMBER
- MAINTENANCE SHAFT (M.S.)  
 TOP OF MANHOLE R.L.  
 MANHOLE NUMBER  
 LINE NUMBER
- TERMINAL MAINTENANCE  
 SHAFT (T.M.S.)  
 TOP OF MANHOLE R.L.  
 MANHOLE NUMBER  
 LINE NUMBER

HOUSE CONNECTION TYPES		
		TYPE A DIRECT ROOM
		TYPE B JUMP UP
		TYPE C DIRECT DOWN M.H.
		TYPE D INTERNAL DROP

**SEWERAGE NOTES**

1. ALL LINES LESS THAN 5.7m DEEP ARE 150MM DIAMETER PVCU DWV SN8 IN ACCORDANCE WITH STANDARD AS/NZS 1260:1999. UNLESS SHOWN OTHERWISE.
2. ALL 100mm DIAMETER SEWER LINES LESS THAN 5.7m DEEP ARE PVCU DWV SN10 IN ACCORDANCE WITH STANDARD AS/NZS 1260:1999. UNLESS SHOWN OTHERWISE.
3. ALL WORK IS CONSTRUCTED IN ACCORDANCE WITH CURRENT C.O.T. STANDARD METHODS AND DRAWINGS. 10400 TO 10460.
4. EACH ALLOTMENT IS SERVED BY A 100MM PROPERTY CONNECTION.
5. O.B.'S ARE LOCATED 1.5m FROM DOWNSTREAM ALIGNMENT.
6. PROPERTY CONNECTION BRANCHES EXTEND INTO THE PROPERTY A MINIMUM OF 1.0m.
7. INSTALLATION AND COMPACTION OF TRENCH BACKFILL IS CARRIED OUT STRICTLY IN ACCORDANCE WITH C.O.T. AUS. SPEC. AND TO THE COMPACTION VALUES SHOWN IN THE JOB SPECIFICATION SCHEDULES.
8. PROPERTY CONNECTIONS CROSSING U/G ELECTRICITY ALLOCATION TO HAVE A MINIMUM OF 1.0m COVER.
9. TOP OF MANHOLES ARE 150mm ABOVE F.S.L. AS PER C.O.T. STANDARD DWGS.
10. ROAD CROSSINGS BACKFILLED WITH CRUSHER DUST COMPACTED TO NOT LESS THAN 95% OF THE STANDARD MAX. DRY DENSITY TO A.S. 1289, INCLUDING FUTURE ROAD CROSSINGS.
11. SEWER MANHOLES ARE LOCATED 1.5m FROM THE PROPERTY BOUNDARIES U.N.O.

**DATUM**  
 PM No. 131651 LOCATED ON  
 HERVEY RANGE ROAD (BOLT IN BITUMEN)  
 RL 19.246m AHD



No.	Amendments	By	Appd	Date	No.	Amendments	By	Appd	Date
A	ORIGINAL ISSUE	S.J.J		14.05.07					

Civil Engineers  
 Structural Engineers  
 Project Managers  
 ABN 23 010 743 692

**BMD**  
 CONSULTING

Townsville Office  
 57 Mitchell Street,  
 Townsville  
 P.O. Box 6028  
 Townsville MC, QD 4810  
 Ph: (07) 4750 7000  
 Fax: (07) 4750 7077  
 Email: bmd@bmd.com.au  
 www.bmd.com.au

Head Office - Brisbane  
 Ph: (07) 3593 1511  
 Sydney Office  
 Ph: (02) 9696 5400

Design  
 Drawn S.J.J  
 Checked W.E.S  
 Original Approved By:

RPEQ No. 6948  
 Date MAY '07  
 Datum A.H.D.

Client  
**URBEX Pty Ltd**

Project  
**KALYNDIA CHASE - STAGE 4C**

Task  
**SEWERAGE RETICULATION LAYOUT PLAN**

**AS CONSTRUCTED**  
 Drawing No. **CT-1173-803**  
 Rev **A**

THIS DRAWING CANNOT BE COPIED OR REPRODUCED IN ANY FORM OR USED FOR ANY OTHER PURPOSE OTHER THAN THAT ORIGINALLY INTENDED WITHOUT THE WRITTEN PERMISSION OF BMD CONSULTING PTY LTD.