

FOR CONTINUATION REFER DWG. CT1170-234



SEWERAGE LEGEND

- EXISTING SEWERAGE
- FUTURE SEWERAGE
- SEWERAGE
- SEWER MANHOLE (M.H.)
TOP OF MANHOLE R.L.
MANHOLE NUMBER
LINE NUMBER
- MAINTENANCE SHAFT (M.S.)
TOP OF MANHOLE R.L.
MANHOLE NUMBER
LINE NUMBER
- TERMINAL MAINTENANCE SHAFT (T.M.S.)
TOP OF MANHOLE R.L.
MANHOLE NUMBER
LINE NUMBER

BRAZIER MOTTI PTY LTD. ACN 066 411 041
 595 FLINDERS ST. TOWNSVILLE, HEREBY CERTIFY THAT
 THIS DRAWING ACCURATELY AND CORRECTLY DESCRIBES
 AND RECORDS THE NATURE AND LOCATION OF THE WORKS
 DEPICTED BY ASTERISKS (*) HEREIN AS THEY HAVE BEEN
 CONSTRUCTED FOR SUBDIVISION

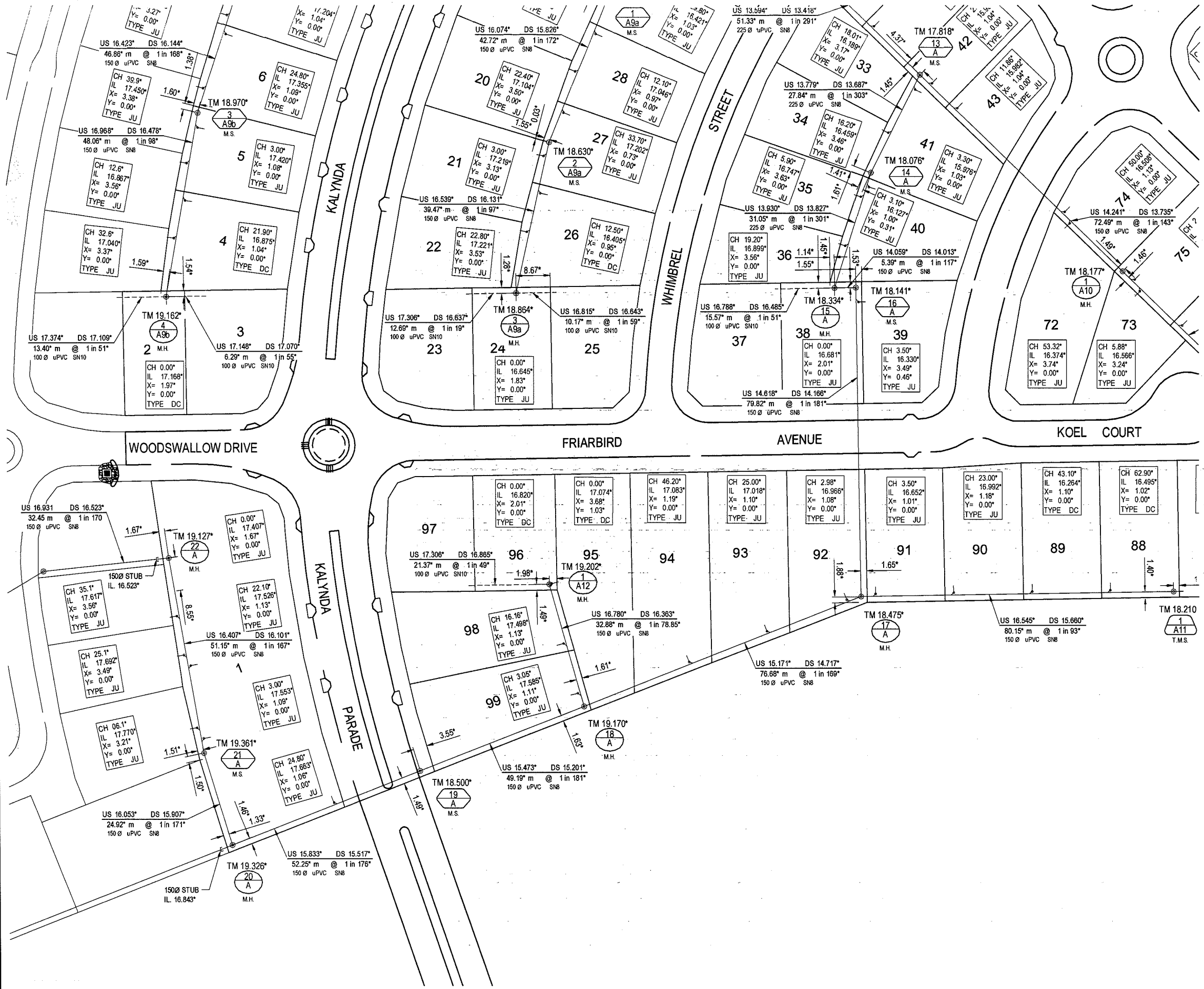
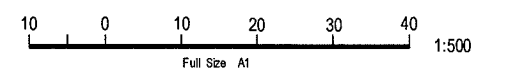
LICENSED SURVEYOR & DIRECTOR
 Dated This ... day of ... 200...

SEWERAGE NOTES

1. ALL LINES LESS THAN 5.7m DEEP ARE 150MM. DIAMETER PVCU DWV SN8 IN ACCORDANCE WITH STANDARD AS/NZS 1260:1999. UNLESS SHOWN OTHERWISE.
2. ALL 100mm DIAMETER SEWER LINES LESS THAN 5.7m DEEP ARE PVCU DWV SN10 IN ACCORDANCE WITH STANDARD AS/NZS 1260:1999. UNLESS SHOWN OTHERWISE.
3. CONTRACTOR VERIFIED FINISHED SURFACE LEVELS ON SITE BEFORE CONSTRUCTION OF SEWERS AND PROPERTY CONNECTION BRANCHES.
4. ALL WORK CONSTRUCTED IN ACCORDANCE WITH CURRENT C.O.T. STANDARD METHODS AND DRAWINGS. 10400 TO 10400.
5. EACH ALLOTMENT SERVED BY A 100MM. PROPERTY CONNECTION. THE CONTRACTOR HAD PROPERTY BOUNDARIES PEGGED AND LOCATION OF PROPERTY CONNECTIONS CONFIRMED PRIOR TO COMMENCING CONSTRUCTION OF PROPERTY CONNECTION BRANCHES.
6. O.B'S LOCATED 1.5m FROM DOWNSTREAM ALIGNMENT.
7. PROPERTY CONNECTION BRANCHES EXTEND INTO THE PROPERTY A MINIMUM OF 1.0m.
8. INSTALLATION AND COMPACTION OF TRENCH BACKFILL CARRIED OUT STRICTLY IN ACCORDANCE WITH C.O.T. AUS. SPEC. AND TO THE COMPACTION VALUES SHOWN IN THE JOB SPECIFICATION SCHEDULES.
9. ALL WORK ASSOCIATED WITH LIVE SEWERS OR MANHOLES CARRIED OUT BY THE CONTRACTOR UNDER THURINGOWA CITY COUNCIL SUPERVISION.
10. THE CONTRACTOR VERIFIED LOCATIONS OF EXISTING SERVICES WITH ALL RELEVANT AUTHORITIES BEFORE COMMENCING CONSTRUCTION.
11. THE CONSTRUCTION OF SEWERAGE WORK SHOWN ON THIS DRAWING WAS SUPERVISED IN ACCORDANCE WITH C.O.T. POLICIES AND DEPARTMENT OF LOCAL GOVERNMENT REQUIREMENTS.
12. PROPERTY CONNECTIONS CROSSING U/G ELECTRICITY ALLOCATION HAVE A MINIMUM OF 1.0m COVER.
13. TOP OF MANHOLES IS 150mm ABOVE F.S.L. AS PER C.O.T. STANDARD DWGS.
14. ROAD CROSSINGS ARE BACK FILLED WITH CRUSHER DUST COMPACTED TO NOT LESS THAN 96% OF THE STANDARD MAX. DRY DENSITY TO A.S. 1289, INCLUDING FUTURE ROAD CROSSINGS
15. SEWER MANHOLES LOCATED 1.5M FROM THE PROPERTY BOUNDARIES U.N.O.

DATUM

PM No.131651 LOCATED ON
 HERVEY RANGE ROAD (BOLT IN BITUMEN)
 RL 19.248



FOR CONTINUATION REFER DWG. CT1170-233

No.	Amendments	By	Appd	Date	No.	Amendments	By	Appd	Date
A	ORIGINAL ISSUE	JAM		06.02.06					



Civil Engineers
 Structural Engineers
 Project Managers
 ABN 23 010 743 002

Townsville Office
 87 Whimbrel Street,
 Townsville
 P.O. Box 5008
 Townsville MC, QLD 4810
 Ph: (07) 4750 7000
 Fax: (07) 4750 7077
 Email: bmd.com.au@bmd.com.au
 www.bmd.com.au

Head Office - Brisbane
 Ph: (07) 3993 1511
 Sydney Office
 Ph: (02) 9998 5400

Calmar Office
 Ph: (07) 4035 1544

Design	JAM
Drawn	MW
Checked	
Original Approved By:	
RP/LO No.	5355
Date	FEB 06
Datum	A.H.D.

Client
URBEX Pty Ltd

Project
KALYNDA CHASE - STAGE 1

Title
AS CONSTRUCTED SEWERAGE RETICULATION

Drawing No.
CT-1170-232

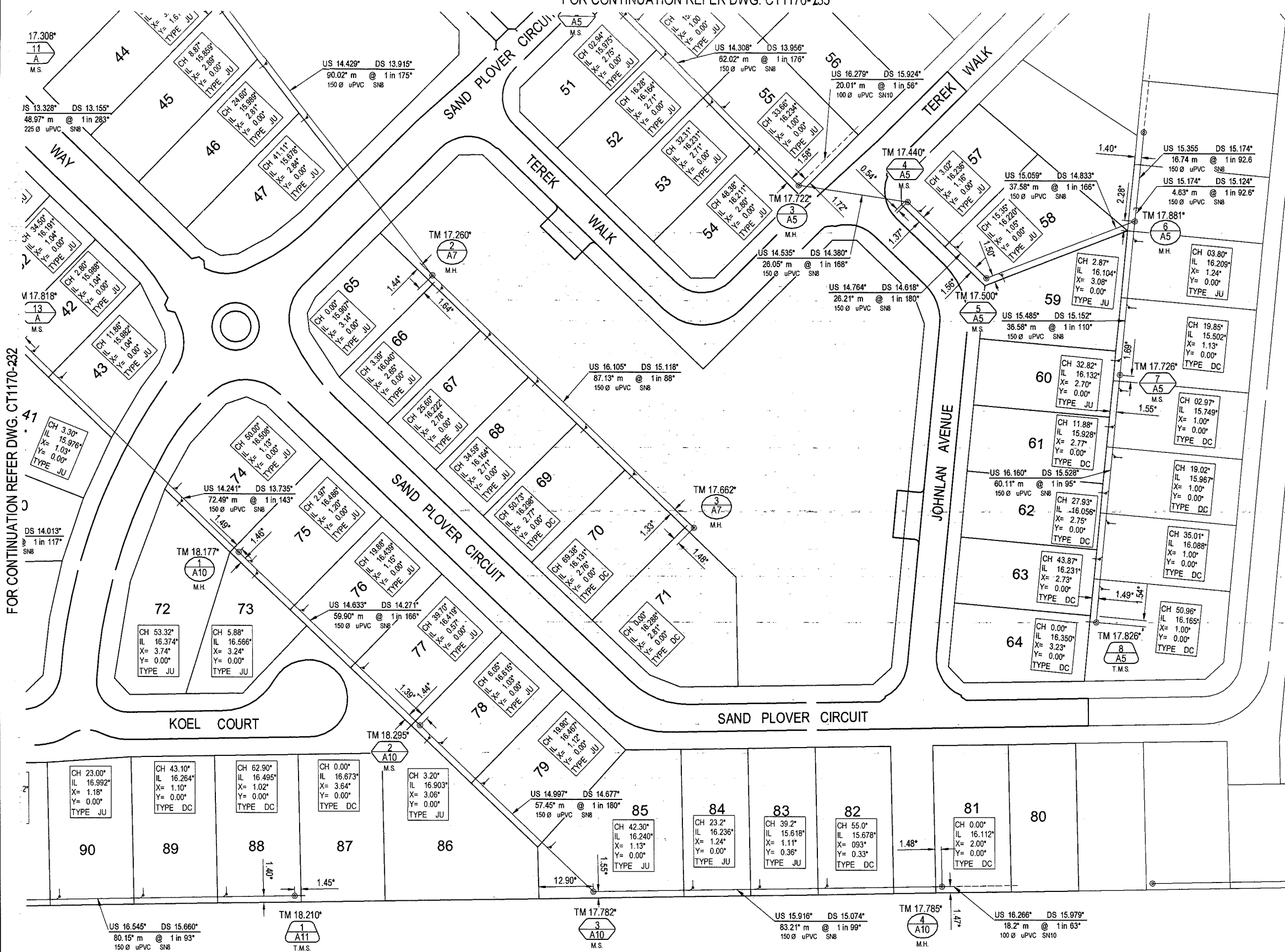
Rev
A

AS CONSTRUCTED

LAYOUT PLAN SHEET 1 OF 5

JCT 1170 - 1 - COT 1170 - Kalynda Chase St. Townsville, Queensland, Australia. 2006.02.06 12:45:41 PM. View: 00000002

FOR CONTINUATION REFER DWG. CT1170-235



SEWERAGE LEGEND

- EXISTING SEWERAGE
- FUTURE SEWERAGE
- SEWERAGE
- SEWER MANHOLE (M.H.)
 - TOP OF MANHOLE R.L. MANHOLE NUMBER LINE NUMBER
 - TOP OF MANHOLE R.L. MANHOLE NUMBER LINE NUMBER
 - TOP OF MANHOLE R.L. MANHOLE NUMBER LINE NUMBER
- MAINTENANCE SHAFT (M.S.)
 - TOP OF MANHOLE R.L. MANHOLE NUMBER LINE NUMBER
 - TOP OF MANHOLE R.L. MANHOLE NUMBER LINE NUMBER
 - TOP OF MANHOLE R.L. MANHOLE NUMBER LINE NUMBER
- TERMINAL MAINTENANCE SHAFT (T.M.S.)
 - TOP OF MANHOLE R.L. MANHOLE NUMBER LINE NUMBER
 - TOP OF MANHOLE R.L. MANHOLE NUMBER LINE NUMBER
 - TOP OF MANHOLE R.L. MANHOLE NUMBER LINE NUMBER



BRAZIER MOTTI PTY LTD. ACN 066 411 041
 585 FLINDERS ST. TOWNSVILLE, HEREBY CERTIFY THAT
 THIS DRAWING ACCURATELY AND CORRECTLY DESCRIBES
 AND RECORDS THE NATURE AND LOCATION OF THE WORKS
 DEPICTED BY ASTERISKS (*) HEREON AS THEY HAVE BEEN
 CONSTRUCTED FOR SUBDIVISION

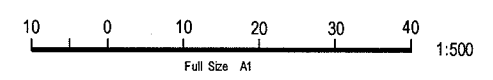
SEAL OF
 BRAZIER MOTTI PTY LTD.
 LICENSED SURVEYOR & DIRECTOR
 No. 11111

SEWERAGE NOTES

1. ALL LINES LESS THAN 5.7m DEEP ARE 150MM. DIAMETER PVCU DWV SN8 IN ACCORDANCE WITH STANDARD AS/NZS 1260:1999. UNLESS SHOWN OTHERWISE.
2. ALL 100mm DIAMETER SEWER LINES LESS THAN 5.7m DEEP ARE PVCU DWV SN10 IN ACCORDANCE WITH STANDARD AS/NZS 1260:1999. UNLESS SHOWN OTHERWISE.
3. CONTRACTOR VERIFIED FINISHED SURFACE LEVELS ON SITE BEFORE CONSTRUCTION OF SEWERS AND PROPERTY CONNECTION BRANCHES.
4. ALL WORK CONSTRUCTED IN ACCORDANCE WITH CURRENT C.O.T. STANDARD METHODS AND DRAWINGS. 10400 TO 10460.
5. EACH ALLOTMENT SERVED BY A 100MM. PROPERTY CONNECTION. THE CONTRACTOR HAD PROPERTY BOUNDARIES PEGGED AND LOCATION OF PROPERTY CONNECTIONS CONFIRMED PRIOR TO COMMENCING CONSTRUCTION OF PROPERTY CONNECTION BRANCHES.
6. O.B.'S LOCATED 1.5m FROM DOWNSTREAM ALIGNMENT.
7. PROPERTY CONNECTION BRANCHES EXTEND INTO THE PROPERTY A MINIMUM OF 1.0m.
8. INSTALLATION AND COMPACTION OF TRENCH BACKFILL CARRIED OUT STRICTLY IN ACCORDANCE WITH C.O.T. AUS. SPEC. AND TO THE COMPACTION VALUES SHOWN IN THE JOB SPECIFICATION SCHEDULES.
9. ALL WORK ASSOCIATED WITH LIVE SEWERS OR MANHOLES CARRIED OUT BY THE CONTRACTOR UNDER THURINGOWA CITY COUNCIL SUPERVISION.
10. THE CONTRACTOR VERIFIED LOCATIONS OF EXISTING SERVICES WITH ALL RELEVANT AUTHORITIES BEFORE COMMENCING CONSTRUCTION.
11. THE CONSTRUCTION OF SEWERAGE WORK SHOWN ON THIS DRAWING WAS SUPERVISED IN ACCORDANCE WITH C.O.T. POLICIES AND DEPARTMENT OF LOCAL GOVERNMENT REQUIREMENTS.
12. PROPERTY CONNECTIONS CROSSING UG ELECTRICITY ALLOCATION HAVE A MINIMUM OF 1.0m COVER.
13. TOP OF MANHOLES IS 150mm ABOVE F.S.L AS PER C.O.T. STANDARD DWGS.
14. ROAD CROSSINGS ARE BACKFILLED WITH CRUSHER DUST COMPACTED TO NOT LESS THAN 95% OF THE STANDARD MAX. DRY DENSITY TO A.S. 1289, INCLUDING FUTURE ROAD CROSSINGS
15. SEWER MANHOLES LOCATED 1.5M FROM THE PROPERTY BOUNDARIES U.N.O.

DATUM

PM No.131651 LOCATED ON
 HERVEY RANGE ROAD (BOLT IN BITUMEN)
 RL 19.248



FOR CONTINUATION REFER DWG. CT1170-232

No.	Amendments	By	Appd	Date	No.	Amendments	By	Appd	Date
A	ORIGINAL ISSUE	JAM		06.02.06					



Civil Engineers
 Structural Engineers
 Project Managers
 ABN 23 010 743 692

Townsville Office
 87 Mitchell Street,
 Townsville
 P.O. Box 6008
 Townsville MC, QLD 4810
 Ph: (07) 4750 7000
 Fax: (07) 4750 7077
 Email: bmdcon@bmdconsulting.com.au
 www.bmdconsulting.com.au

Head Office - Brisbane
 Ph: (07) 3363 1811
 Sydney Office
 Ph: (02) 9586 6400

Design
 Drawn
 Checked
 Original Approved By
 RPELO No.
 Date
 Datum

JAM
 MW

 FEB '06
 A.H.D.

Client
URBEX Pty Ltd

Project
KALYNDA CHASE - STAGE 1

Title
AS CONSTRUCTED SEWERAGE RETICULATION LAYOUT PLAN SHEET 2 OF 5

AS CONSTRUCTED
 Drawing No. **CT-1170-233**
 Rev **A**

JCT:1170 - 1 - Kalynda Chase Stage 1 Drawings.ctb:CT1170-AC:12_138.SEP:06 12:45:38 PM 1/10/06

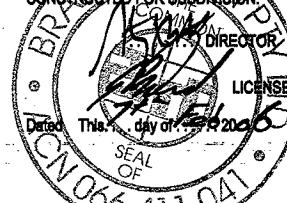


SEWERAGE LEGEND

- EXISTING SEWERAGE
- FUTURE SEWERAGE
- SEWERAGE
- SEWER MANHOLE (M.H.)
 - TOP OF MANHOLE R.L.
 - MANHOLE NUMBER
 - LINE NUMBER
 -
- MAINTENANCE SHAFT (M.S.)
 - TOP OF MANHOLE R.L.
 - MANHOLE NUMBER
 - LINE NUMBER
 -
- TERMINAL MAINTENANCE SHAFT (T.M.S.)
 - TOP OF MANHOLE R.L.
 - MANHOLE NUMBER
 - LINE NUMBER
 -

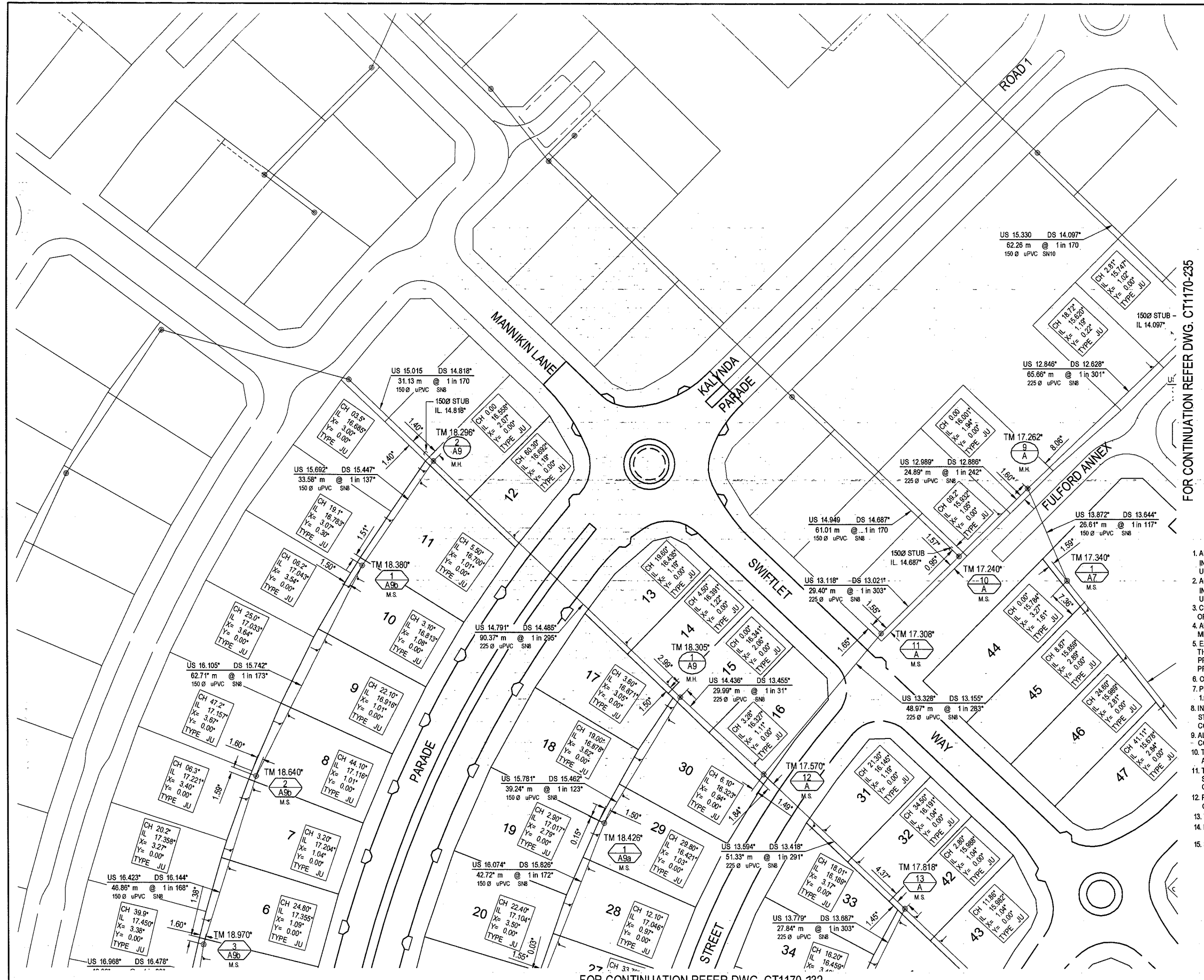
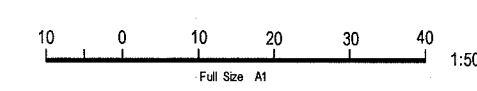
SEWERAGE NOTES

1. ALL LINES LESS THAN 5.7m DEEP ARE 150MM. DIAMETER PVCU DWV SN8 IN ACCORDANCE WITH STANDARD AS/NZS 1260:1999. UNLESS SHOWN OTHERWISE.
2. ALL 100mm DIAMETER SEWER LINES LESS THAN 5.7m DEEP ARE PVCU DWV SN10 IN ACCORDANCE WITH STANDARD AS/NZS 1260:1999. UNLESS SHOWN OTHERWISE.
3. CONTRACTOR VERIFIED FINISHED SURFACE LEVELS ON SITE BEFORE CONSTRUCTION OF SEWERS AND PROPERTY CONNECTION BRANCHES.
4. ALL WORK CONSTRUCTED IN ACCORDANCE WITH CURRENT C.O.T. STANDARD METHODS AND DRAWINGS. 10400 TO 10460.
5. EACH ALLOTMENT SERVED BY A 100MM PROPERTY CONNECTION. THE CONTRACTOR HAD PROPERTY BOUNDARIES PEGGED AND LOCATION OF PROPERTY CONNECTIONS CONFIRMED PRIOR TO COMMENCING CONSTRUCTION OF PROPERTY CONNECTION BRANCHES.
6. O.B.S LOCATED 1.5m FROM DOWNSTREAM ALIGNMENT.
7. PROPERTY CONNECTION BRANCHES EXTEND INTO THE PROPERTY A MINIMUM OF 1.0m.
8. INSTALLATION AND COMPACTION OF TRENCH BACKFILL CARRIED OUT STRICTLY IN ACCORDANCE WITH C.O.T. AUS. SPEC. AND TO THE COMPACTION VALUES SHOWN IN THE JOB SPECIFICATION SCHEDULES.
9. ALL WORK ASSOCIATED WITH LIVE SEWERS OR MANHOLES CARRIED OUT BY THE CONTRACTOR UNDER THURINGOWA CITY COUNCIL SUPERVISION.
10. THE CONTRACTOR VERIFIED LOCATIONS OF EXISTING SERVICES WITH ALL RELEVANT AUTHORITIES BEFORE COMMENCING CONSTRUCTION.
11. THE CONSTRUCTION OF SEWERAGE WORK SHOWN ON THIS DRAWING WAS SUPERVISED IN ACCORDANCE WITH C.O.T. POLICIES AND DEPARTMENT OF LOCAL GOVERNMENT REQUIREMENTS.
12. PROPERTY CONNECTIONS CROSSING U/G ELECTRICITY ALLOCATION HAVE A MINIMUM OF 1.0m COVER.
13. TOP OF MANHOLES IS 150mm ABOVE F.S.L. AS PER C.O.T. STANDARD DWGS.
14. ROAD CROSSINGS ARE BACKFILLED WITH CRUSHER DUST COMPACTED TO NOT LESS THAN 95% OF THE STANDARD MAX. DRY DENSITY TO A.S. 1289, INCLUDING FUTURE ROAD CROSSINGS
15. SEWER MANHOLES LOCATED 1.5M FROM THE PROPERTY BOUNDARIES U.N.O.



DATUM

PM No. 131651 LOCATED ON HERVEY RANGE ROAD (BOLT IN BITUMEN) RL 19.248



FOR CONTINUATION REFER DWG. CT1170-235

FOR CONTINUATION REFER DWG. CT1170-232

No.	Amendments	By	Appd	Date	No.	Amendments	By	Appd	Date
A	ORIGINAL ISSUE	JAM		06.02.06					

urbox

Civil Engineers
Structural Engineers
Project Managers
ABN 23 010 743 092

BMD CONSULTING

Design Office: 87 Mitchell Street, Townsville, P.O. Box 0008, Townsville MC, QLD 4810
Ph: (07) 4750 7000, Fax: (07) 4750 7077, Email: bmd@bmd.com.au, www.bmd.com.au

Head Office - Brisbane: Ph: (07) 3283 1811, Fax: (07) 3283 1812, Email: bmd@bmd.com.au, www.bmd.com.au

Calmar Office: Ph: (07) 4236 1544, Fax: (07) 4236 1545, Email: bmd@bmd.com.au, www.bmd.com.au

Design	JAM	Client	URBEX Pty Ltd
Drawn	MW	Project	KALYNDA CHASE - STAGE 1
Checked		Title	AS CONSTRUCTED SEWERAGE RETICULATION
Original Approved By:			AS CONSTRUCTED
RPEU No.			Drawing No. CT-1170-234
Date	FEB '06		Rev A
Datum	A.H.D.		LAYOUT PLAN SHEET 3 OF 5

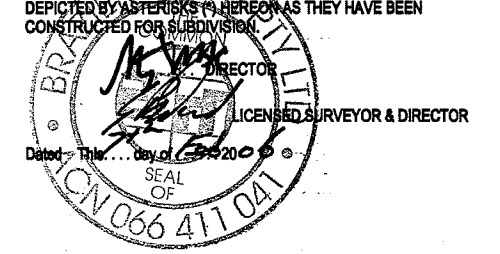
J:\CT-1170-1-2021-1170 - Kalynnda Chase S1\Drawings\DWG\CT1170-AC-12_13658P.dwg, 2020/02/12 12:45:20 PM, User: urbox



SEWERAGE LEGEND

- EXISTING SEWERAGE
- FUTURE SEWERAGE
- SEWERAGE
- SEWER MANHOLE (M.H.)
 - TOP OF MANHOLE R.L. TM 17.00
 - MANHOLE NUMBER 1
 - LINE NUMBER A9
 - M.H.
- MAINTENANCE SHAFT (M.S.)
 - TOP OF MANHOLE R.L. TM 17.00
 - MANHOLE NUMBER 2
 - LINE NUMBER A3b
 - M.S.
- TERMINAL MAINTENANCE SHAFT (T.M.S.)
 - TOP OF MANHOLE R.L. TM 17.00
 - MANHOLE NUMBER 3
 - LINE NUMBER B2
 - T.M.S.

BRAZIER MOTTI PTY LTD. ACN 066 411 041
 596 FLINDERS ST. TOWNSVILLE, HEREBY CERTIFY THAT
 THIS DRAWING ACCURATELY AND CORRECTLY DESCRIBES
 AND RECORDS THE NATURE AND LOCATION OF THE WORKS
 DEPICTED BY ASTERISKS * HEREON AS THEY HAVE BEEN
 CONSTRUCTED FOR SUBDIVISION

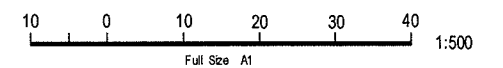


SEWERAGE NOTES

1. ALL LINES LESS THAN 5.7m DEEP ARE 150MM. DIAMETER PVCU DWV SN8 IN ACCORDANCE WITH STANDARD AS/NZS 1260:1999. UNLESS SHOWN OTHERWISE.
2. ALL 100mm DIAMETER SEWER LINES LESS THAN 5.7m DEEP ARE PVCU DWV SN10 IN ACCORDANCE WITH STANDARD AS/NZS 1260:1999. UNLESS SHOWN OTHERWISE.
3. CONTRACTOR VERIFIED FINISHED SURFACE LEVELS ON SITE BEFORE CONSTRUCTION OF SEWERS AND PROPERTY CONNECTION BRANCHES.
4. ALL WORK CONSTRUCTED IN ACCORDANCE WITH CURRENT C.O.T. STANDARD METHODS AND DRAWINGS. 10400 TO 10460.
5. EACH ALLOTMENT SERVED BY A 100MM. PROPERTY CONNECTION. THE CONTRACTOR HAD PROPERTY BOUNDARIES PEGGED AND LOCATION OF PROPERTY CONNECTIONS CONFIRMED PRIOR TO COMMENCING CONSTRUCTION OF PROPERTY CONNECTION BRANCHES.
6. O.B.'S LOCATED 1.5m FROM DOWNSTREAM ALIGNMENT.
7. PROPERTY CONNECTION BRANCHES EXTEND INTO THE PROPERTY A MINIMUM OF 1.0m.
8. INSTALLATION AND COMPACTION OF TRENCH BACKFILL CARRIED OUT STRICTLY IN ACCORDANCE WITH C.O.T. AUS. SPEC. AND TO THE COMPACTION VALUES SHOWN IN THE JOB SPECIFICATION SCHEDULES.
9. ALL WORK ASSOCIATED WITH LIVE SEWERS OR MANHOLES CARRIED OUT BY THE CONTRACTOR UNDER THURINGOWA CITY COUNCIL SUPERVISION.
10. THE CONTRACTOR VERIFIED LOCATIONS OF EXISTING SERVICES WITH ALL RELEVANT AUTHORITIES BEFORE COMMENCING CONSTRUCTION.
11. THE CONSTRUCTION OF SEWERAGE WORK SHOWN ON THIS DRAWING WAS SUPERVISED IN ACCORDANCE WITH C.O.T. POLICIES AND DEPARTMENT OF LOCAL GOVERNMENT REQUIREMENTS.
12. PROPERTY CONNECTIONS CROSSING U/G ELECTRICITY ALLOCATION HAVE A MINIMUM OF 1.0m COVER.
13. TOP OF MANHOLES IS 150mm ABOVE F.S.L. AS PER C.O.T. STANDARD DWGS.
14. ROAD CROSSINGS ARE BACKFILLED WITH CRUSHER DUST COMPACTED TO NOT LESS THAN 95% OF THE STANDARD MAX. DRY DENSITY TO A.S. 1289, INCLUDING FUTURE ROAD CROSSINGS
15. SEWER MANHOLES LOCATED 1.5M FROM THE PROPERTY BOUNDARIES U.N.O.

DATUM

PM No. 131651 LOCATED ON
 HERVEY RANGE ROAD (BOLT IN BITUMEN)
 RL 19.248



No.	Amendments	By	Appd	Date	No.	Amendments	By	Appd	Date
A	ORIGINAL ISSUE	JAM		06.02.06					

Civil Engineers
Structural Engineers
Project Managers
ABN 23 010 743 902

Townsville Office
57 Mitchell Street
Townsville
P.O. Box 9008
Townsville MC, QLD 4810
Ph: (07) 4750 7000
Fax: (07) 4780 7277
email: bmd@bmdconsulting.com.au
www.bmd.com.au

Head Office - Brisbane
Ph: (07) 3983 1811

Calbra Office
Ph: (07) 4026 1844

Sydney Office
Ph: (02) 9586 6400

Design: JAM
Drawn: JAM
Checked: MW
Original Approved By: [Signature]
RPEQ No. [Number]
Date: FEB '06
Datum: A.H.D.

Client: **URBEX Pty Ltd**

Project: **KALYNDA CHASE - STAGE 1**

Title: **AS CONSTRUCTED SEWERAGE RETICULATION**

AS CONSTRUCTED
Drawing No. **CT-1170-236** Rev **A**

JCT:1:100 - L: 20CT1170 - Kalynka Chase Sp. 10 Drawing/Sheet 1170-AC-102_136-SEP-06 12:45:26 PM - ViewSheet2